

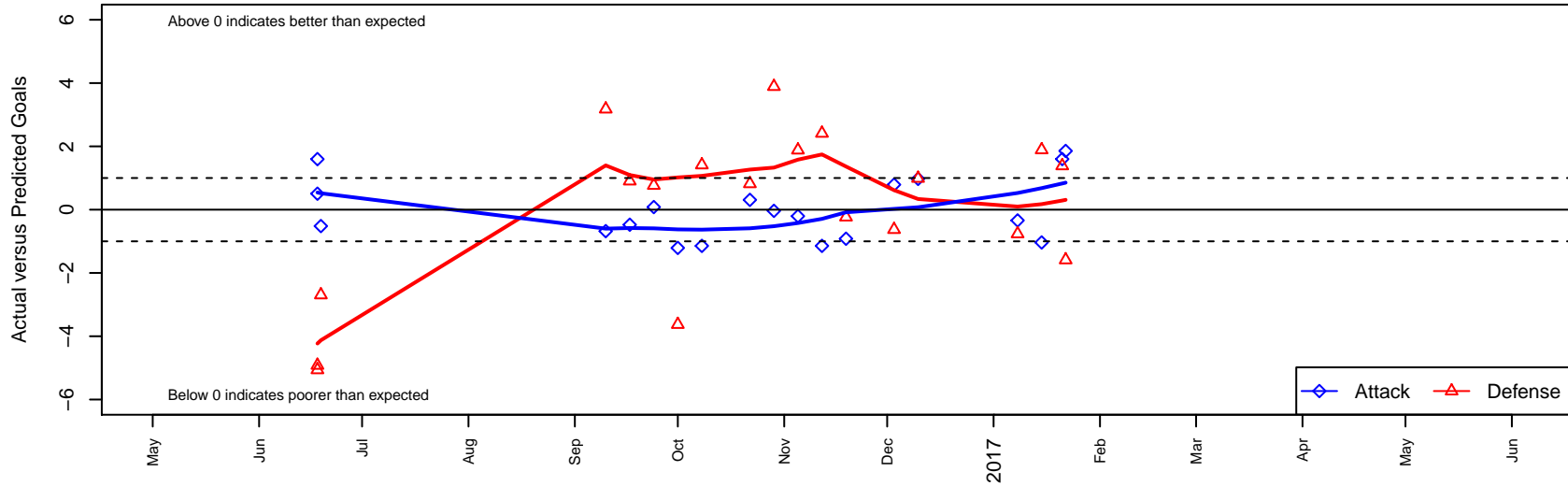
Lake Hills Blue Devils B05

Lake Hills SC
 Bellevue, WA
 B05 total strength=316
 attack=0.24 defense=0.15
 fall league = NPSL Div 2 (05) U12

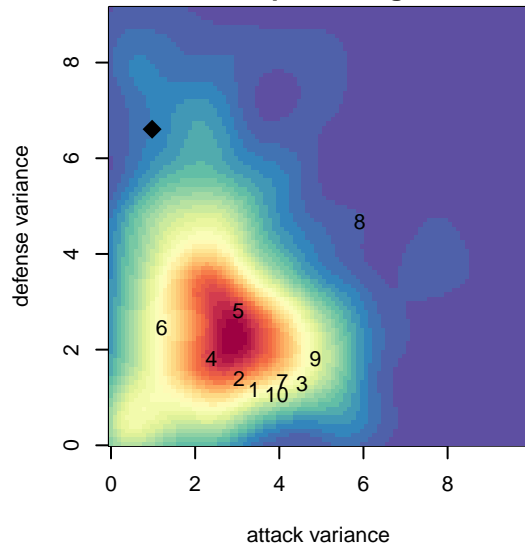
alt names used:
 LAKE HILLS SELECTBLUE DEVILS

Venues played:
 2016 Snohomish United Invt Silver
 2016 NPSL Division 2 (05) U12
 2016 Founders Cup B05 Div A

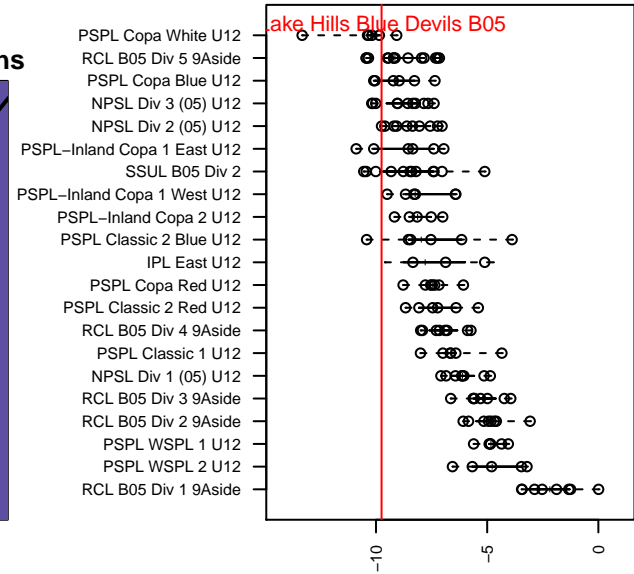
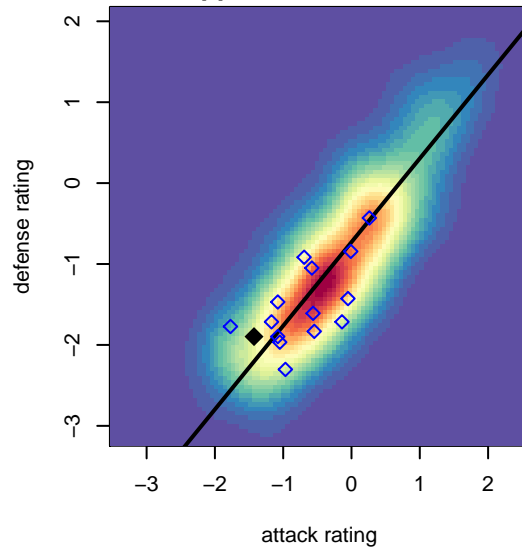
Lake Hills Blue Devils B05
 Dots are actual minus expected GF (blue circles) and GA (red triangles).
 Blue line is smoothed change in attack strength. Red is smoothed change in defense strength.



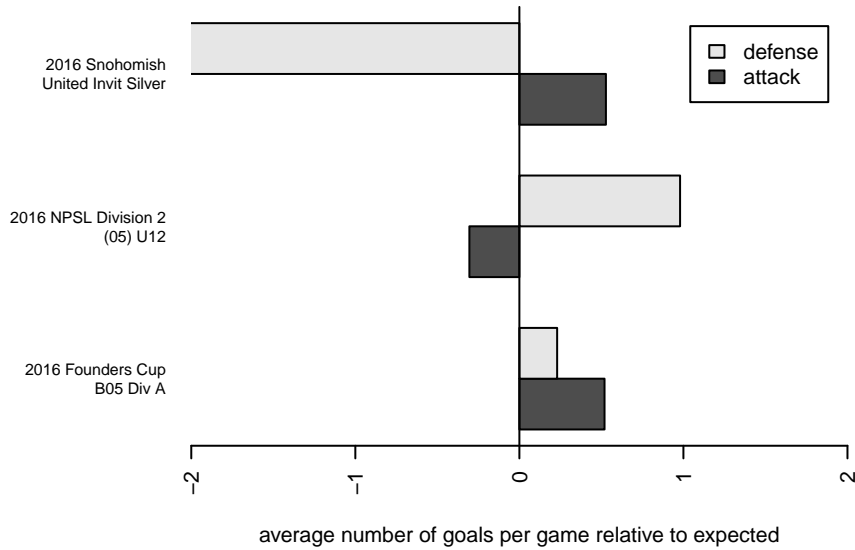
**attack and defense variance (black dot)
relative to other teams
and top 10 in region**



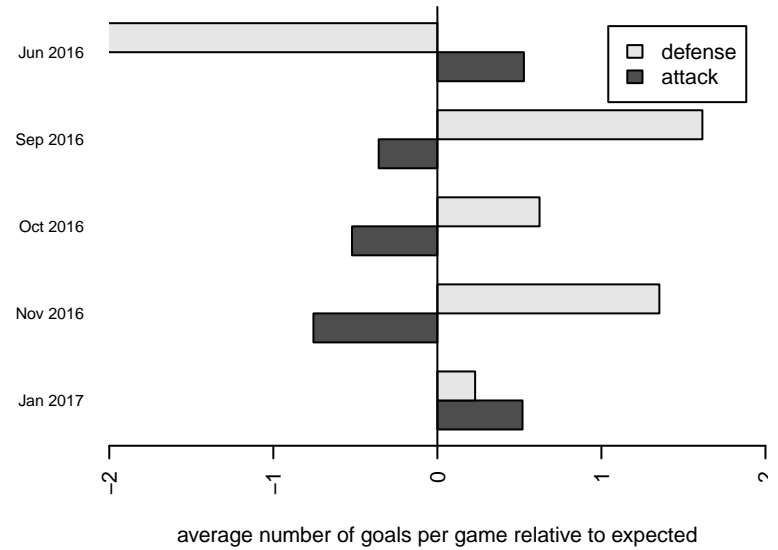
**attack and defense rating
relative to others at age
and all opponents in last 13 months**



Performance relative to 13 month average



Performance relative to 13 month average



date	home		away		venue	pred.home	pred.away
2017-01-22	Seattle United S White B05	4	Lake Hills Blue Devils B05	3	2016 Founders Cup B05 Div A	2.41	1.14
2017-01-21	Mukilteo Rush Nero B05	0	Lake Hills Blue Devils B05	3	2016 Founders Cup B05 Div A	1.38	1.40
2017-01-15	Lake Hills Blue Devils B05	0	Newport FC A B05	5	2016 Founders Cup B05 Div A	1.04	6.89
2017-01-08	Lake Hills Blue Devils B05	0	Crossfire Select Pratt B05	10	2016 Founders Cup B05 Div A	0.34	9.23
2016-12-10	Lake Hills Blue Devils B05	3	Mercer Island FC Wolves B05	2	2016 NPSL Division 2 (05) U12	2.03	2.99
2016-12-03	Lake Hills Blue Devils B05	2	Storm King B05	5	2016 NPSL Division 2 (05) U12	1.21	4.37
2016-11-19	Seattle United W White B05	3	Lake Hills Blue Devils B05	0	2016 NPSL Division 2 (05) U12	2.77	0.92
2016-11-12	Lake Hills Blue Devils B05	0	Seattle United S White B05	0	2016 NPSL Division 2 (05) U12	1.14	2.41
2016-11-05	Lake Hills Blue Devils B05	1	South Whidbey Tsunami B05	5	2016 NPSL Division 2 (05) U12	1.20	6.88
2016-10-29	Newport FC A B05	3	Lake Hills Blue Devils B05	1	2016 NPSL Division 2 (05) U12	6.89	1.04
2016-10-22	Crossfire Select Pedraza B05	3	Lake Hills Blue Devils B05	2	2016 NPSL Division 2 (05) U12	3.82	1.69
2016-10-08	Seattle United S White B05	1	Lake Hills Blue Devils B05	0	2016 NPSL Division 2 (05) U12	2.41	1.14
2016-10-01	Storm King B05	8	Lake Hills Blue Devils B05	0	2016 NPSL Division 2 (05) U12	4.37	1.21
2016-09-24	Lake Hills Blue Devils B05	1	Seattle United W White B05	2	2016 NPSL Division 2 (05) U12	0.92	2.77
2016-09-17	Lake Hills Blue Devils B05	1	NWSC Deception FC Green B05	2	2016 NPSL Division 2 (05) U12	1.48	2.90
2016-09-10	NSC Synergy White B05	1	Lake Hills Blue Devils B05	0	2016 NPSL Division 2 (05) U12	4.18	0.68
2016-06-19	BIFC Blue B05	10	Lake Hills Blue Devils B05	0	2016 Snohomish United Invit Silver	7.31	0.52
2016-06-18	Lake Hills Blue Devils B05	1	FC Edmonds B05	10	2016 Snohomish United Invit Silver	0.50	4.94
2016-06-18	Crossfire Premier E B05	8	Lake Hills Blue Devils B05	3	2016 Snohomish United Invit Silver	3.08	1.40